

180 Elgin Street

94,102 sq. ft.

Highlights

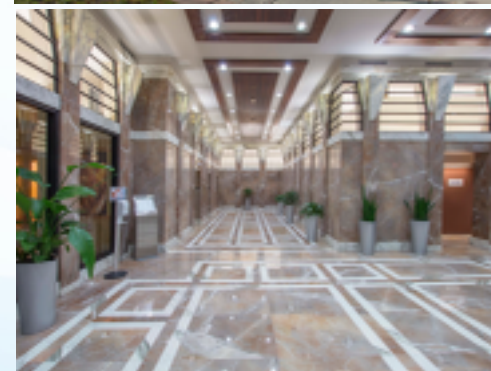
Barrister House is situated in the heart of Ottawa, immediately opposite the Central Court and Registry Office. It is a pleasant walk to the Rideau Centre, Sparks Street Mall and Parliament Hill. Ten floors of office space and five floors of parking provide for the needs of both tenants and their clients. A typical floor is around 9,400sf.

The systems in Barrister House were designed for effectiveness and energy conservation. Continuous monitoring ensures that the heating, cooling and ventilation levels are properly adjusted for comfort and energy efficiency.

All light fixtures are recessed and equipped with prismatic acrylic lenses. The building's functions have been divided so that the parking levels are serviced by a separate elevator. The office portion is serviced by two high-speed elevators.

Available Space

Floor	Type	Rentable sf	Useable sf	Available
6th	Office	9,455	8,615	Immediately
7th	Office	9,441	8,614	Immediately
8th	Office	2,064	1,873	Immediately
11th	Office	3,602	3,288	Immediately
12th	Office	2,129	1,944	Immediately
13th	Office	1,333	1,190	Immediately

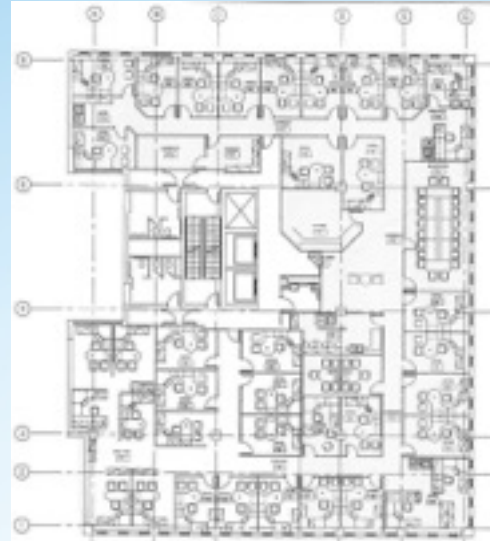


Floor Plans



6th Floor

Rentable: 9,455 sf
Useable: 8,615 sf



7th Floor

Rentable: 9,441 sf
Useable: 8,614 sf



8th Floor

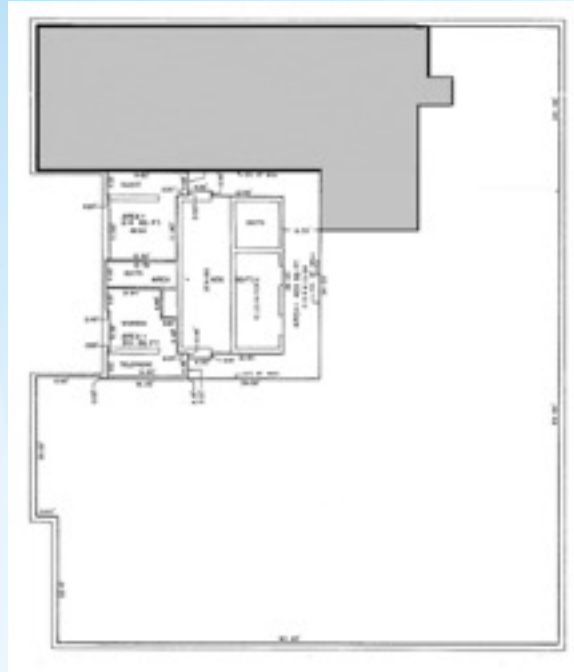
Rentable: 2,064 sf
Useable: 1,873 sf



11th Floor

Rentable: 3,602 sf
Useable: 3,288 sf

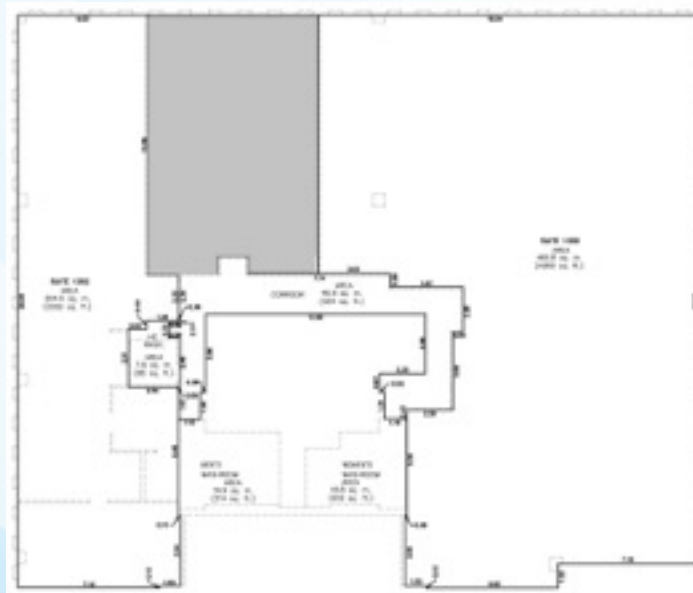
Floor Plans



12th Floor

Rentable: 2,129 sf

Useable: 1,944 sf



13th Floor

Rentable: 1,333 sf

Useable: 1,190 sf