



# 1564-1574 Carling Avenue 38,021 Sq. Ft.

## Highlights

**The Vail's Building** is a retail/industrial/office building comprised of retail stores on the ground floor facing the street, offices on the second floor and warehouse space at the rear of the building. There is on-site parking available for approximately 120 vehicles.

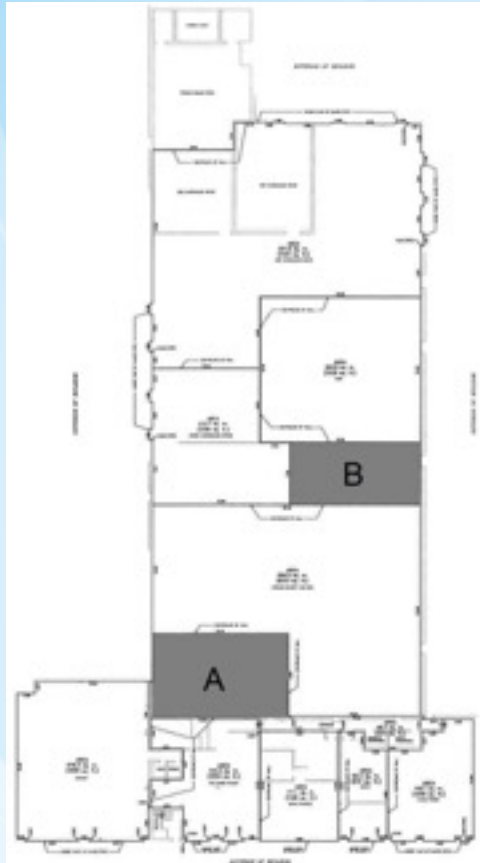
The building is conveniently located on the south side of Carling Avenue east of Churchill Avenue. This site provides easy access to both east and west Highway 417 at Kirkwood Avenue. Carling Avenue is home to a number of commercial developments including restaurants, retail plazas and office developments.

## Available Space

Floor	Type	Rentable SF	Available
1568 (A)	Retail/Warehouse	1,478	Immediately
1568 (B)	Warehouse	1,128	Immediately
2nd	Office	3,261	Immediately



# Floor Plans



## Ground Floor

(A) Rentable: 1,478 sf

(B) Rentable: 1,128 sf



## 2nd Floor

Rentable: 3,261 sf Usable: 2,856 sf